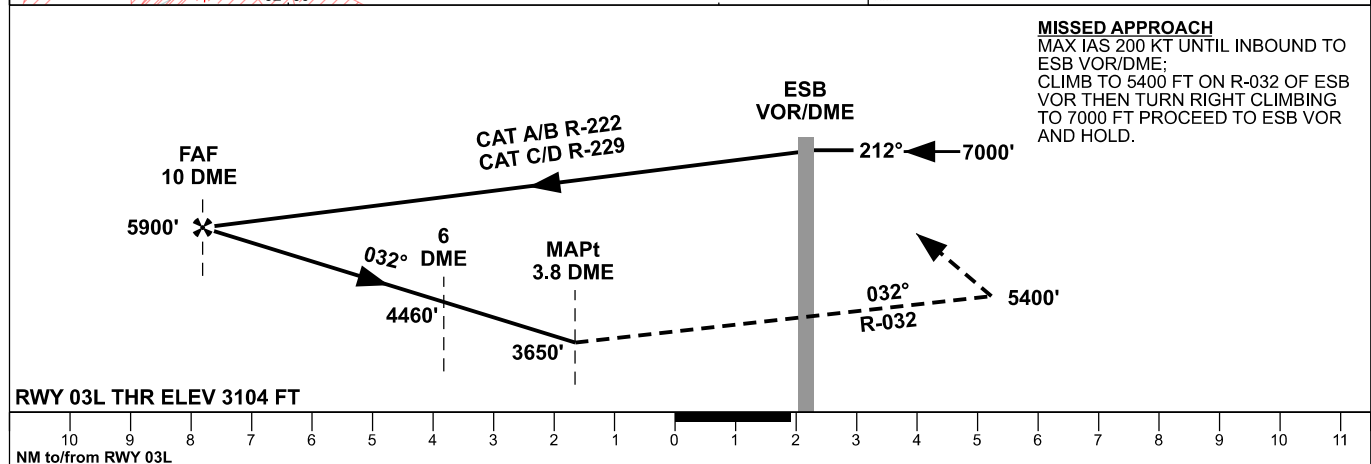
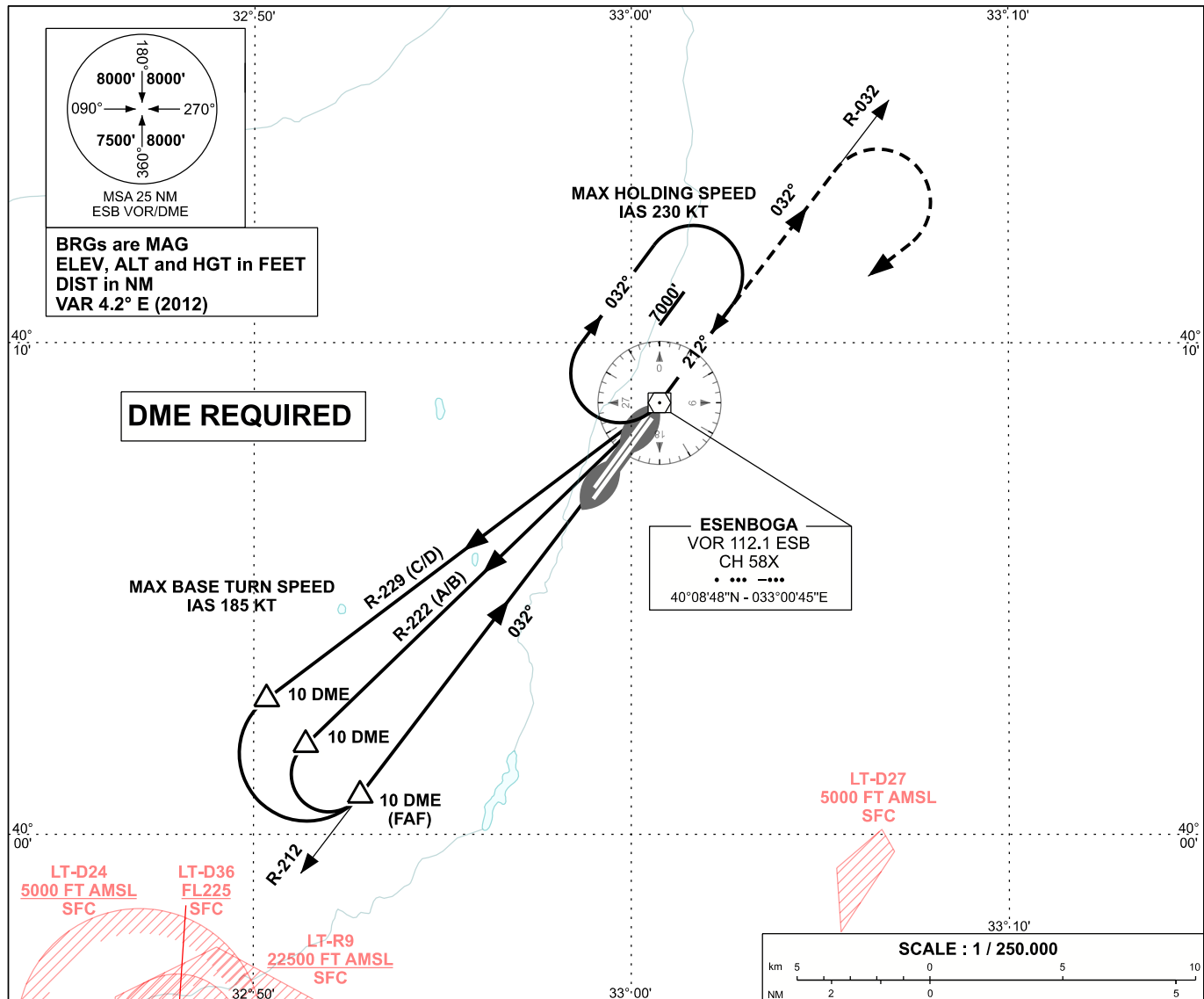


ANKARA/ESENBOĞA
VOR Z
RWY 03L

APP	119.6 - 119.1	AD ELEV	3127 FT
TWR	118.1 - 257.8	TRANSITION ALTITUDE	10 000 FT
ATIS	123.6		

INSTRUMENT
APPROACH
CHART - ICAO



OCA (H)	A	B	C	D
Straight-in Approach	3650' (546')			
Circling	3800' (673')		4650' (1523')	